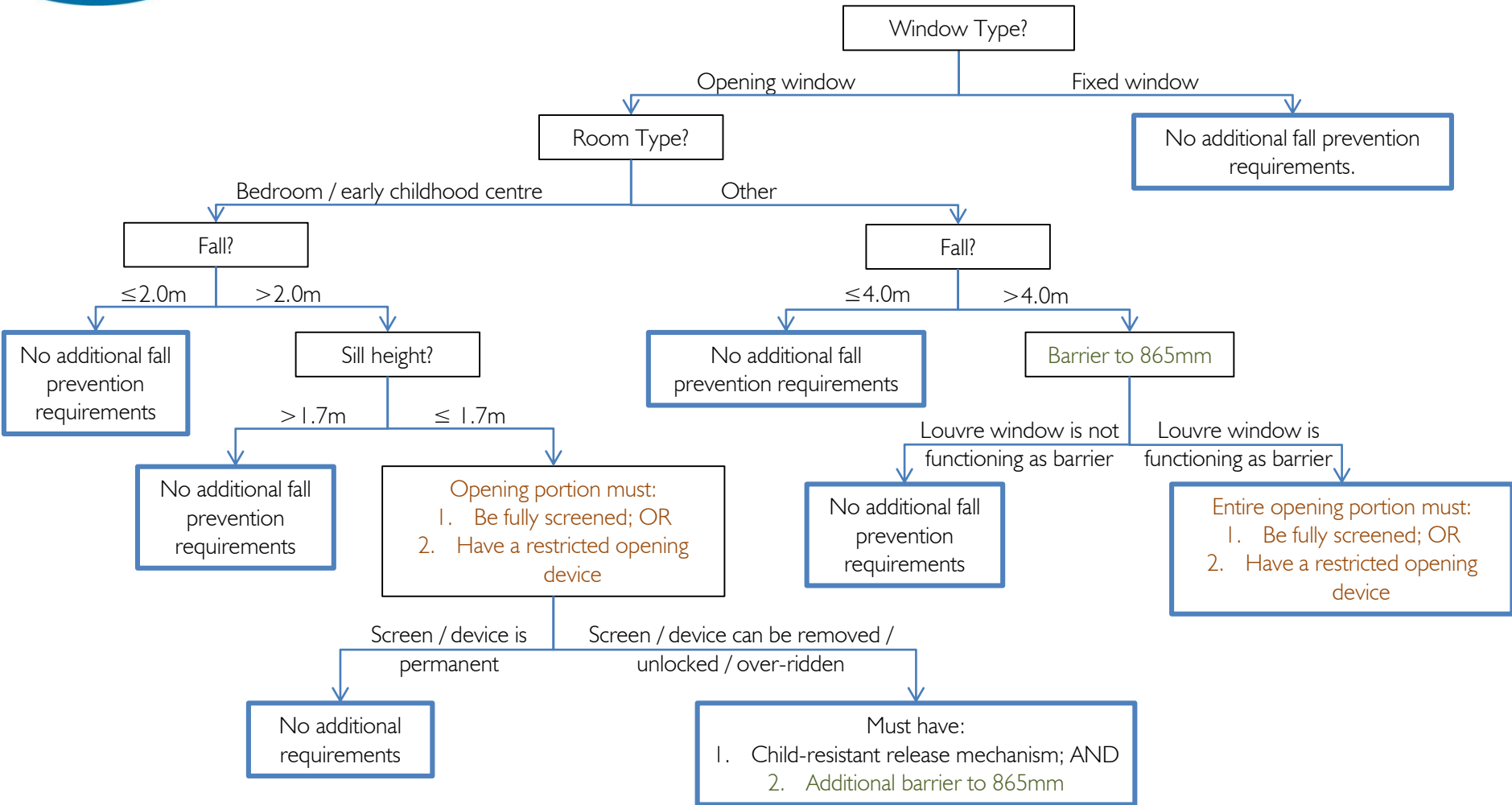




Fall Prevention Requirements Decision Tree



Screen & restricted opening devices must:

1. Prevent a 125mm sphere from passing through; AND
2. Resist a horizontal, outward force of 250N

Testing is required.

Barriers must:

1. Prevent a 125mm sphere from passing through; AND
2. Resist a horizontal, outward force of 250N; AND
3. Have no horizontal or near-horizontal climbable elements between 150mm and 760mm.

Your Breezway Contact:
Warren Gannaway
Business Development Manager
warren.gannaway@breezway.com.au
0430 033 297